

10,000 Locks Opening with 1 Key



CEO Messages

How can we address the challenges presented by a world prone to recurring safety accidents and deliver top-notch safety services? How can we aid individuals in adopting innovative safety management approaches, effectively preempting safety incidents before they even arise? These inquiries propel our mission— **Eliminate Security Vulnerabilities** !

Technologically

We utilize cutting-edge digital, encryption, and communication technologies to enable advanced access control systems. These systems bring numerous benefits to clients in sectors such as telecommunications, power, oil and gas, chemicals, and railways. They enhance safety, reduce costs, and improve efficiency.

Culturally

We value diversity, freedom, equality, openness, and inclusivity. Our collaborative work environment promotes continuous learning and personal growth. We prioritize employee well-being and offer a fulfilling work experience.

Environmentally

We are dedicated to environmental sustainability. Our products meet strict environmental standards, and we partner with suppliers who prioritize low carbon emissions. Our goal is to lead the lock control industry and guide our clients towards a transformative future.



Moving forward, we will continue to invest in innovation, sustainable development, and talent development to provide intelligent and cost-efficient solutions to our valued clients. Our commitment is to deliver personalized solutions that precisely meet our clients' unique operational needs, providing tangible value. Our focus remains on delivering exceptional customer service, building strong partnerships, and maintaining a culture of excellence and accountability. Through our efforts, we aim for a future where safety is never compromised.

Sincerely
Eddy E

A handwritten signature in black ink, appearing to be 'Eddy E' in a stylized, cursive script.

Innovation Supports Sustainable Development

JWM was established in 2001, specializing in the R&D and manufacturing of electromechanical access control system products for automatic identification technology, encryption technology, and Internet of Things technology.

As a national high-tech enterprise, a double-soft certification enterprise, a national technology-based small and medium-sized enterprise, a member of the American ALOA and the British MLA Locksmith Association, JWM has 118 innovations, 89 professional domestic and foreign certifications and patents.

“To provide you with the best security solution in the world” is the overall goal of the company’s development plan. JWM have been sold to 128 countries and have 7,500 partners at home and abroad.

At present, the Vanma electromechanical access control system is widely used in more than 20 industries such as railway, telecom, electric power, bank, military, grain depot, petrochemical, smart city, logistics and warehousing, smart heating, water affairs, exhibition, property, etc. JWM provides security for 300,000 users every day.



6 Reasons To Choose Vanma

The Vanma Access Control System enhances employee management efficiency and assists managers in improving their overall effectiveness.

1. Digital Encryption

Vanma electronic lock system utilizes **AES256** encryption technology to prevent hacking. The lock is designed **without a keyhole**, eliminating the risk of being pried open.

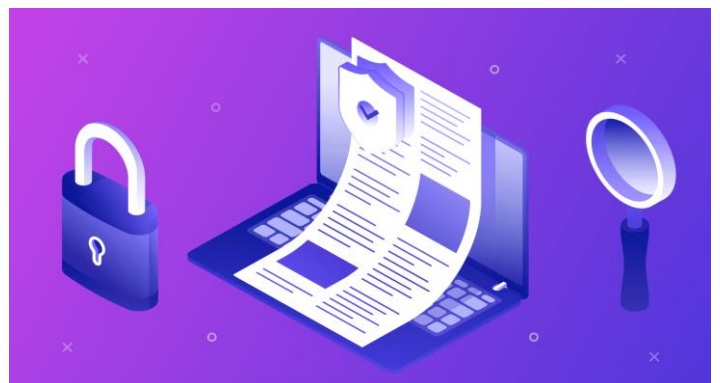


2. Authorization Management

Vanma system allows users to set permissions for each key. Only authorized keys can unlock locks. What's more, one key can be used to unlock multiple locks.

3. Audit Trail

Once unlocked, the key automatically stores the unlocking information, which can be easily uploaded to the software via data cable or Bluetooth. This allows managers to conveniently view and analyze the unlocking data.

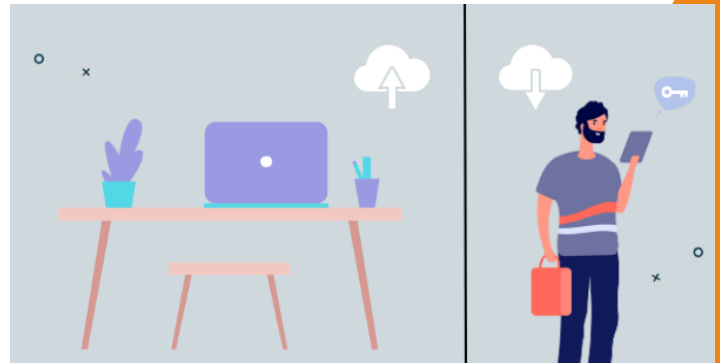


6 Reasons To Choose Vanma

The Vanma Access Control System enhances employee management efficiency and assists managers in improving their overall effectiveness.

4. Remote Authorization

Vanma access control system supports remote authorization, enabling convenient temporary maintenance or other tasks for employees.

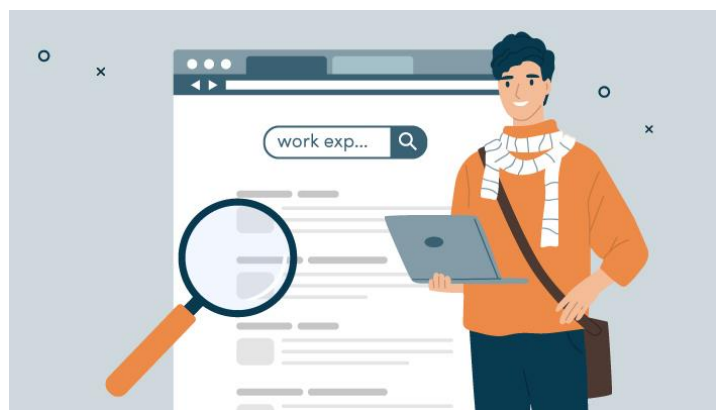


5. Deep customization

Vanma offers customization options for both the system and the locks. If you have specific requirements, feel free to contact us anytime.

6. Rich industry experience

Vanma access control system has been widely adopted in **over 20 industries** including telecommunications, power, logistics, and banking, earning consistent praise from our customers.



Get in touch

Please feel free to contact us if you have any queries related to our products or business. We will get back to you within four hours.



+86-15840536412



sales@lockmanage.com



3F, Block D07, SISP(Shenyang International Software Park), Hunnan District,
Shenyang, Liaoning, China